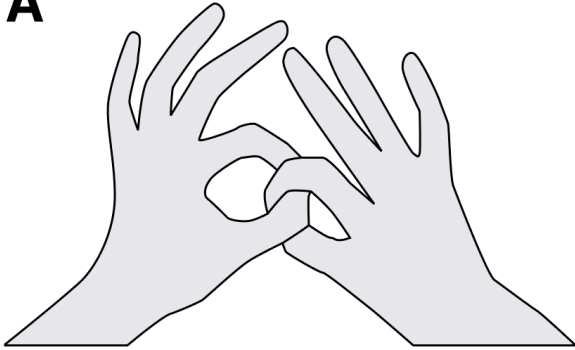


Interlocking Finger Test

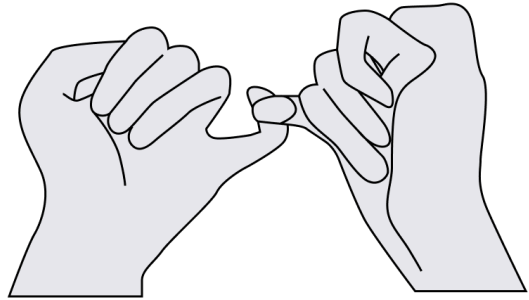
Name: _____ Date: _____

1. Demonstrate each figure below one at a time, positioning your hands in a way that the patient has a clear view. Make sure to hold the position of the figure long enough for the patient to observe and understand.

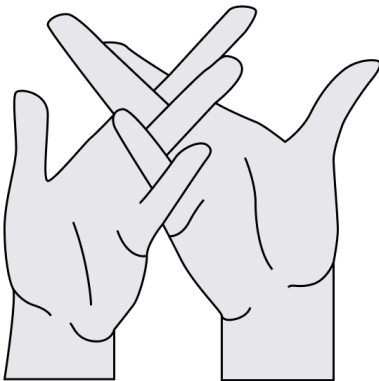
A



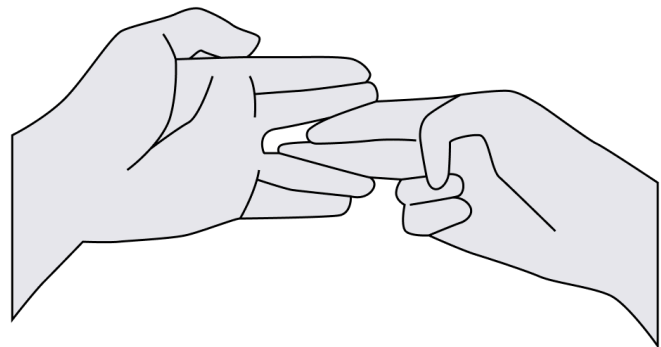
B



C



D



2. If necessary, demonstrate the same figure multiple times to ensure the patient is ready.
3. Avoid discussing or explaining any part of the posture verbally to keep the task focused on imitation.
4. Then, ask the patient to attempt to imitate each figure. Observe whether the patient accurately imitates the interlocking finger component.
5. Award 1 point for each correctly reproduced figure, where the interlocking fingers match, regardless of the position of the other fingers or the arms.
6. Use the sections below to record the score for each pattern and your additional notes.

Scoring

	A	B	C	D	Total score (out of 4)
Score (0 or 1)					

Additional notes

Moo, L. R., Slotnick, S. D., Tesoro, M. A., Zee, D. S., & Hart, J. (2003). Interlocking finger test: A bedside screen for parietal lobe dysfunction. *Journal of Neurology, Neurosurgery & Psychiatry*, 74(4), 530–532. <https://doi.org/10.1136/jnnp.74.4.530>