

Implicit Association Test - Race

Name: _____ Date: _____

PART I: Preliminary Sorting

Please categorize these words as either "Positive" or "Negative."

- 1. Joy _____
- 2. Pain _____
- 3. Love _____
- 4. Sorrow _____
- 5. Happiness _____
- 6. Anguish _____

Assessment Notes:

PART II: First Combined Task

Now, please categorize these faces and words. The categories are "White or Positive" and "Black or Negative."

White or Positive

- 1. Joy



2. Love



3. Happiness



Black or Negative

1. Pain



2. Sorrow



3. Anguish



Assessment Notes:

PART III: Second Combined Task (Task Reversal)

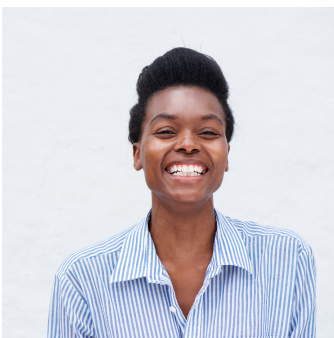
Now, the categories have been switched. Please categorize the following under "Black or Positive" and "White or Negative."

Black or Positive

1. Joy



2. Love



3. Happiness



White or Negative

1. Pain



2. Sorrow



3. Anguish



Assessment Notes:

ART IV: Speed Measurement

Your response times to each task will be measured.

Assessment Notes:

Once again, it's important to note that this is a simplified example and doesn't encapsulate the comprehensive procedure of an actual Implicit Association Test.