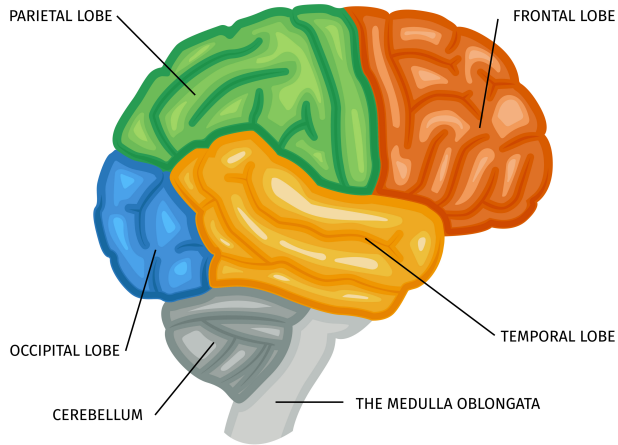


Brain Diagram

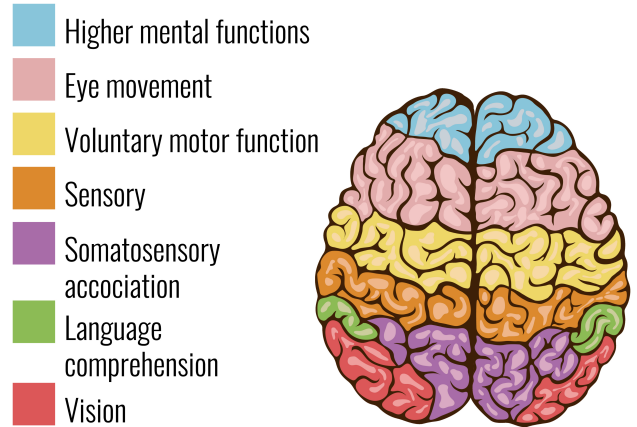
Name:

Date:

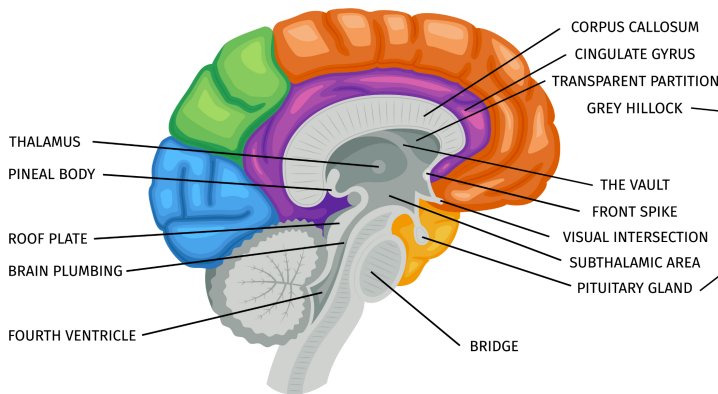
LATERAL VIEW



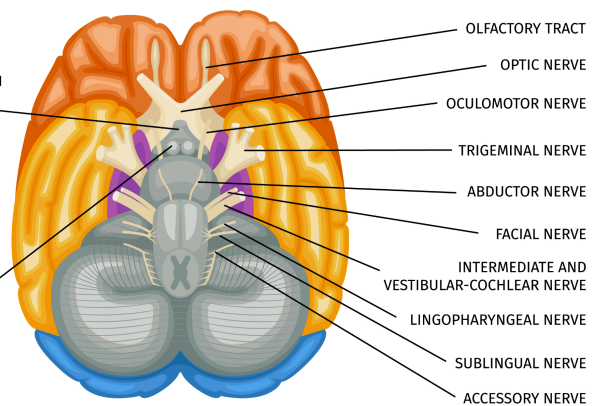
SUPERIOR VIEW



SAGGITAL VIEW



INFERIOR VIEW



- | | | | |
|--|---|---|---|
| ■ PARIETAL LOBE | ■ FRONTAL LOBE | ■ MEDULLA OBLONGATA | ■ CINGULATE GYRUS |
| ■ OCCIPITAL LOBE | ■ TEMPORAL LOBE | ■ NERVES | ■ CEREBELLUM |

Illustrations: Macrovector / Freepik

NOTES